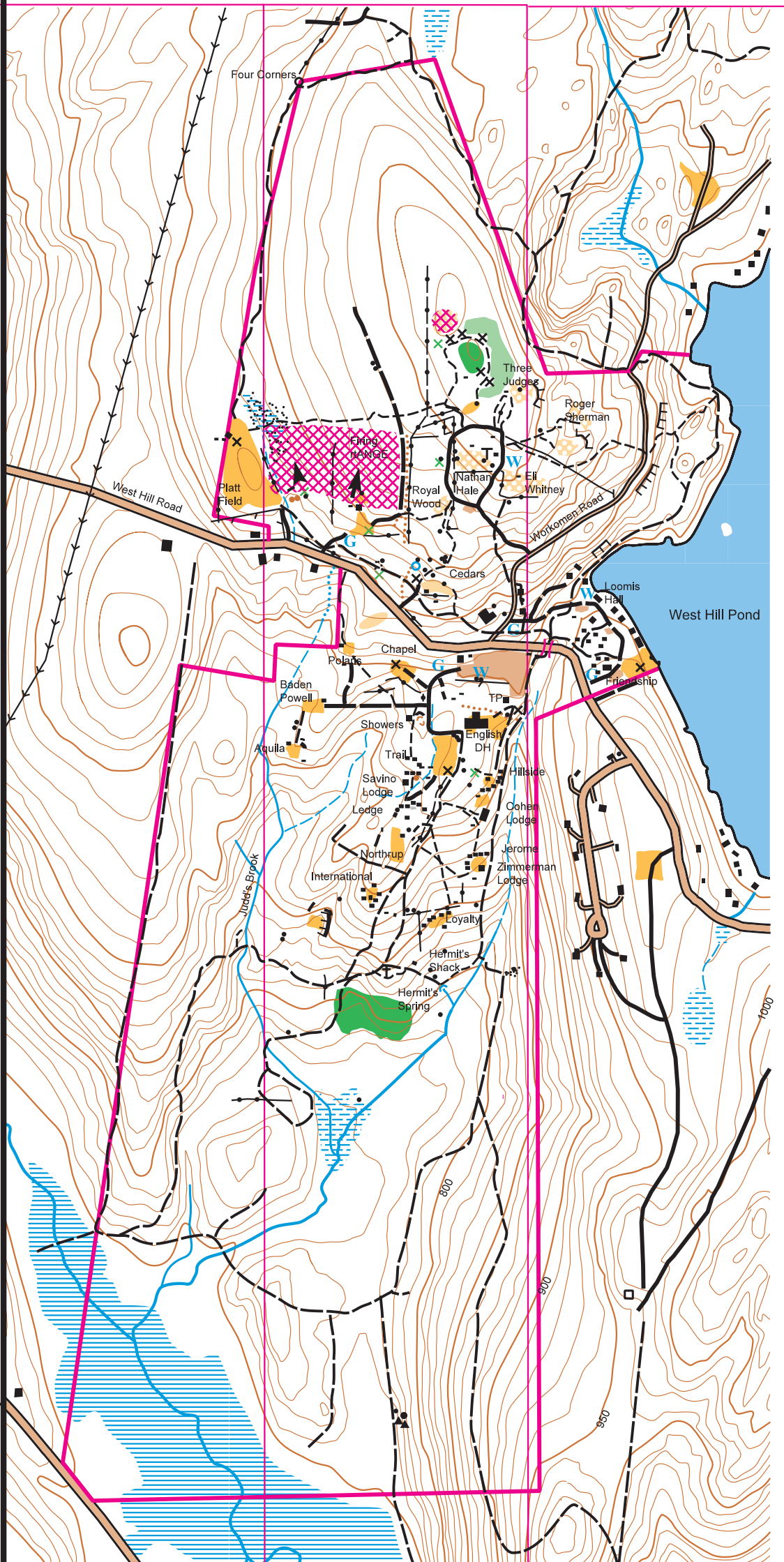


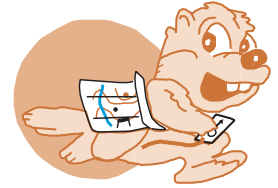
Camp Sequassen

Connecticut Yankee Council

Boy Scouts of America



Scale 1:15,000
Contour Interval 10'
Grid lines are drawn to True north



Western Connecticut
Orienteering Club

Check in with Camp Master Upon Arrival at Main Parking Lot
Park in Main Parking Lot Only
Driving Through Camp is Prohibited (with Few Exceptions)
Absolutely No Driving on Grassy Fields
Speed Limit Within Camp is 5 Miles Per Hour
Water Is On in Campsites Between April 15 and October 15.
Nearest Hospital is in Torrington - Take Rt 8 South to Exit 43 - Follow Signs
Use Tunnel at All Times to Cross West Hill Road

Base map: USGS
Field survey and OCAD: Tom Guerin, Steve Worthington

Last revision: 8/20/02
© Copyright 2002 Western Connecticut Orienteering Club. All rights reserved. This map may not be reproduced or copied without the written permission of WCOC. For information on maps or orienteering, call 860-658-7963.

WCOC web page: <http://www.faculty.fairfield.edu/rdewitt/wcoc>

Portions of this map are private property. Please respect posted signs and obviously inhabited areas. Park boundaries are approximate

	Contour Lines, Index Contours
	Roads Large, Small
	Trails Large -> Small
	Boulder Large, Small
	Boulder Cluster
	Rocky Ground
	Marsh, Seasonal Marsh
	Indistinct Stream, Stream
	Depression, Pit
	Dot Knoll
	Cliffs Small -> Large
	Bare Rock
	Rock Pile
	Open Area
	Rough Open Area
	Vegetation - Slow
	Vegetation - Fight
	Root Stock
	Man Made Object, Tower
	Building, Ruin
	Stone Wall, Ruined Stone Wall
	Fence, Uncrossable Fence
	Pipeline, Powerline
	Camp Boundary
	Out Of Bounds Area
	Grave
	Drinking Water, Gate

